

2024 -Celebrating 15 Years of Serving Your Ohana



Lives changed because of our compassionate care	> 15,000 & Growing
Underserved, uninsured patient visits	>10,000 & Growing
Uncompensated care we provided	>\$2 million & Growing
Mainland Travel for Advanced care & research avoided	> 900 & Growing
Unique Lives & hope restored because of Clinical Trials	205 & Growing
Groundbreaking research brought to Hawaii	18 & Growing
Research investments brought to Hawaii	> \$3 million & Growing
Local partners & economy we support	34 & Growing
Local Doctors, staff careers we nurture & support	62 & Growing
Residents, Med & Research Students we nurture	123 & Growing
PubMed Peer reviewed full length scientific publication	6 & Growing
Patients turned away because of payment ability or “quota”	0
Types of health Insurance not accepted	0
Trust YOU, our patients, local & global partners have in us	Priceless
Difference made in precious lives of patients & families	Priceless

SUMMARY of 2024 Oct 19th Neuroscience and Research Symposium



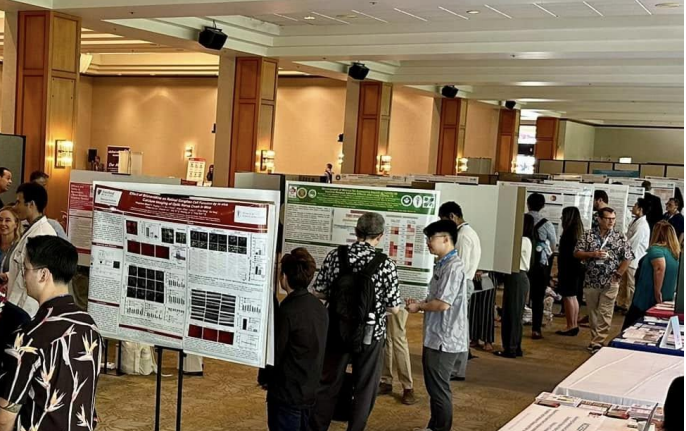
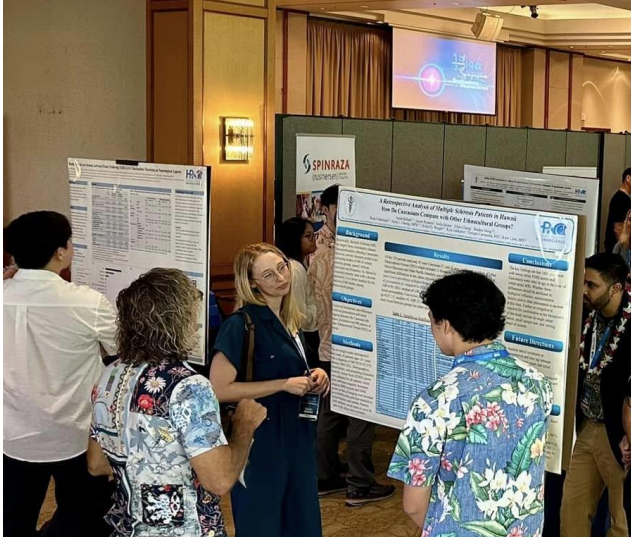
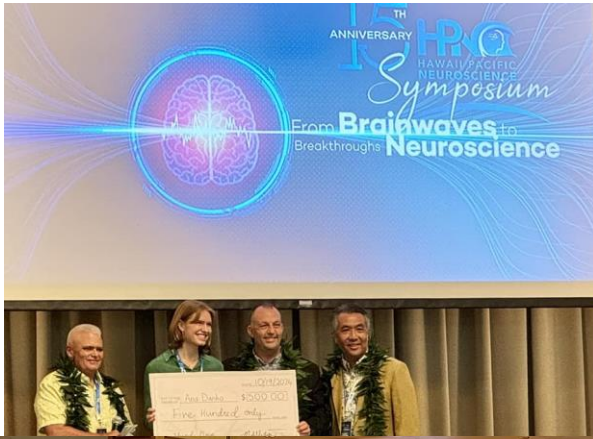
Mahalo to the more than 250 neurologists, psychiatrists, physicians and researchers who attended the symposium. Congratulations to the residents and students who presented over 40 posters and the winners as you are our hope for the future. Mahalo to our sponsors who made it possible to have this event as your investment and partnership to extend care and research to Hawaii's people is changing lives. Most of all to our patients and your advocates, as you are the reason why we have this symposium and the inspiration for all that we do!



Governor of Hawaii Josh Green, M.D. commented that: *"The incredible research presented is a testament to the future of healthcare in Hawai'i, and I couldn't be prouder of the strides we're making Together. Seeing these students—many of whom are from right here in Hawai'i—working toward becoming doctors who will serve our people fills me with hope. They are the next generation of healers, ready to carry forward the mission of compassionate, world-class care for our islands".*

Keynote speaker Michael Lim, M.D., Professor and Chair, Dept. Neurosurgery, Stanford University commented that, *"I sense the pride and happiness of Hawaii's teams for they are in complete alignment of your vision to help the people of Hawaii. It was easy to see that they all had a sense of meaning in what they do."*

2024 Hawaii Neuroscience Research Symposium Oct 19th, 2024



[2024 Symposium Abstracts, Speakers, Judges and Program](#)
[2024 Symposium Pictures](#)

**Join us for
2025 Hawaii Neuroscience & Research Symposium
August 16th, 2025, Saturday**

with Guest of Honor **Sam Shomaker, MD**
Dean, University of Hawaii John Burns School of Medicine.

More information: <https://hawaii neuroscience.com/hpnevents/>




CONFERENCES AND SYMPOSIUM

[2024 HI Neuro & Research Symposium w Gov Josh Green, MD with Research Abstracts, Program Agenda, Speakers and Judges](#)

[2025 HI Neuro & Research Symposium w Dean Sam Shomaker, MD Information](#)

FACULTY, RESEARCH & PUBLICATIONS

Meet our *NEW* Neurologists fellowship trained in Headache, MS, Neuroimmunology, Neuromuscular, EMG, EEG, Video-EEG, Epilepsy

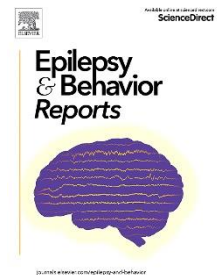
 [2024 List of 7 PubMed Publications & 24 National Presentations](#)



[2024 and 2025 Current Active \(31\) Neuroscience Clinical Trials](#)

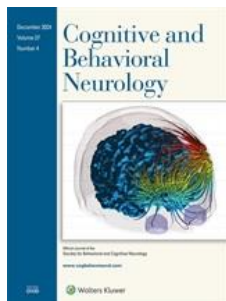
[2024 Center for Rare Neurological Diseases Publications and Research](#)

[Partial Rhombencephalosynapsis Presenting in an Adult with Cerebello-Trigeminal-Dermal Dysplasia. Epilepsy Behav Rep.](#)



[FDA IND173123 Approved to Dose DRPLA Patient #2 Single Center, Single Participant ASO Therapy Study funded by n-Lorem](#)

[2024 Alzheimer's and Memory Center Publications and Research](#)



[Racial/Ethnic Disparities in the Alzheimer's Disease Link with Cardio and Cerebrovascular Diseases, Based on Hawaii Medicare Data - J Alz Dis Report](#)

[Barriers to Alzheimer Disease Clinical Trial Participation in a Minority Population. Cogn Behav Neurol](#)

[Familiarity and Perceptions of Aducanumab in Caregivers of Hawaii Alzheimer's Disease Patients: Results of a Telephone Survey. Cureus.](#)

[Racial Disparities in Cardiometabolic Disorders Among Alzheimer's Disease Patients: A Study on Native Hawaiians and Pacific Islanders. Cureus](#)

[Native Hawaiian and Pacific Islander Participation in Alzheimer's Disease Clinical Trials: Exploration of Zip Code Based Heat Map Patterns. AD/PD, Lisbon Portugal](#)

[Characterizing Small Vessel Disease In Native Hawaiian And Other Pacific Islanders With Dementia: A Retrospective Pilot Study](#)





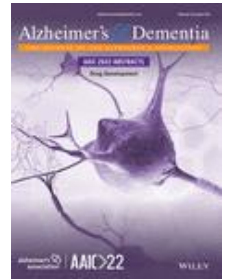
[First Hawaii Site Recognized and Selected to be Part of National Alzheimer's Network \(ALZ-NET\) to Support Evidence-Based Care of Alzheimer's Disease in US](#)

[Hawaii Memory Center 1 of 8 US sites selected to offer Phase 1 Next Generation High Binding Potency Best-in-Class SQ Anti-Amyloid Beta Antibody. Research](#)

[Hawaii's FIRST Alzheimer's Patient treated with Anti Tau Therapy injected directly into the Brain. 1 of 25 US sites selected for this Novel Phase 1 study](#)

[Selected to Investigate Phase 1b study evaluating NMRA-511 for Treatment of Agitation Associated with Alzheimer's Dementia](#)

[Diabetic & Weight Loss Drug May Protect Against Alzheimer's: Hawaii Memory Ctr -1 of 70 US Centers Investigating Semaglutide GLP-1 RA since 2021](#)



[2024 Alzheimer's Neural Network EEG \(ANNE\) Lab Research and Publications](#)

[Abnormal Temporal Slowing on EEG Findings in Preclinical Alzheimer's Disease Patients With the ApoE4 Allele: A Pilot Study. Cureus](#)



[AI Machine Learning EEG at ANNE presented Tokyo, Japan September 2024 AAIC \(Alzheimer's Association International Conference\)](#)

[EEG Slowing and CSF Amyloid Status: Implications for Alzheimer's Disease Detection and Progression. J Neuro Sciences](#)

[2024 Epilepsy Publications and Research](#)

[Diazepam Nasal Spray Administration Is Effective to Control Seizure Clusters Irrespective Of Time Of Day. Front Neurol.](#)



[VNS in Lennox-Gastaut Syndrome: Real-world Experience from CORE-VNS \(P3-1.014\) Neurology Pharmacokinetics and tolerability of single-dose Staccato® alprazolam in adolescents with epilepsy and population PK analysis to support dose selection in adolescents **15th European Epilepsy Congress \(EEC\), Rome, Italy. September, 2024**](#)

[Pharmacokinetics and Tolerability of Single-dose Staccato® Alprazolam in Adolescents with Epilepsy and Population PK Analysis to Support Dose Selection in Adolescents. **American Academy Neurology Meeting, 2024 April.**](#)

[Hawaii Epilepsy Center Investigates BHV-7000 selective activator of Kv7.2/7.3 potassium channels for Epilepsy](#)



2024 Parkinson's Publications and Research

Movement Disorders

[Progression of Dopaminergic Therapy Changes in Parkinson's Disease in Asian and Native Hawaiian and Pacific Islander Populations.](#) *Mov Disord Clin Pract.*



Progression of Parkinson's Disease in Asian and Native Hawaiian and Pacific Islander Populations. International Conference on Alzheimer's and Parkinson's Diseases and related neurological disorders (ADPD), Lisbon, Portugal

2024 ALS & Neuromuscular Publications and Research

[Exploring Radiculopathy in Underserved Communities: A Focus on AANHPI Populations and Risk Factors.](#) *Neurology*

[Hawaii ALS and Neuromuscular Center & Neuromuscular Research Unit selected to Investigate Iptacopan –factor B inhibitor for Generalized Myasthenia Gravis.](#)

[1 of 30 US sites selected for Chronic Inflammatory Demyelinating Polyradiculoneuropathy \(CIDP\) HYBISCUE Study](#)

Neurology®

2024 MS Publications and Research

[Hawaii MS and Neuroimmunology Center & Hawaii Infusion Center selected for OAK \(ABP 692- Biosimilar Candidate to Ocrelizumab\) Study.](#)

2024 Headache Publications and Research

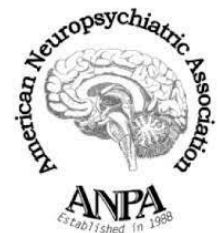
[The Safety and Efficacy of Dual Calcitonin Gene-Related Peptide Therapies for Migraine Treatment](#) *Neurology*

2024 Psychiatric Neuroscience Publications and Research

[Tobacco, Marijuana, and Antidepressant Use Prior to Concussion Are Associated with Increased Depression Risk in Post-concussive Syndrome Patients.](#) *Neurology*

Factors Associated with Depression Risk in Post-Concussive Syndrome Patients in Hawaii. 2024. **American Neuropsychiatric Association 34th Annual Meeting**

[1 of 37 US sites among Cleveland Clinic, Emory & Johns Hopkins, selected to Investigate RE104 – a Novel Shorter Acting Psychedelic for Postpartum Depression](#)



2024 TBI Concussion Publications and Research



[Exercise and Recovery Following Mild-to-Moderate Traumatic Brain Injury in the Community Setting.](#) *Cureus.*

2024 NeuroCOVID Publications and Research

[The National Institutes of Health COVID-19 Neuro Databank/Biobank: Creation and Evolution.](#) *Neuroepidemiology.*



[Download 2024 HPN ANNUAL \(Full 64 Page\) REPORT online](#)



2025 Hawaii Neuroscience Symposium

Innovations in the “Golden Age” of Neuroscience

August 16th, 2025, Saturday 8:00 – 4:00PM

Honolulu, Hawaii

More information; kko@HawaiiNeuroscience.com



Highlights of Innovations & Medical Breakthroughs in Hawaii

Sam Shomaker, M.D.
Professor and Dean, University of
Hawaii John Burns School of Medicine



Emerging Trends in Neuroscience – Are We Living in the Golden Age of Neuroscience?

David Baskin, M.D.
Presidential Distinguished Chair &
Residency Program Director, Dept.
Neurosurgery, Houston Methodist Hospital



How Hawaii is Leading Innovation In Neuroscience

[Kore Kai Liow, M.D.](#)
HPN Neuroscience Chair & Clinical
Professor of Medicine (Neurology),
Clinical & Translational Research, University of
Hawaii John Burns School of Medicine



Sleep Apnea Innovations

[Nicholas Anderson, M.D.](#)
Clinical Lead & Director, [Sleep and
Insomnia Center](#), Clinical Assistant
Professor of Medicine (Neurology)
U of Hawaii John Burns School of Medicine



Innovations in Rewiring Headache & Pain Pathways

[Eonjung Angeline Kim, M.D.](#)
Director, [Headache & Facial
Pain Center](#),

Clinical Assistant Professor of Medicine
(Neurology), University of Hawaii John
Burns School of Medicine



Break Throughs in Neuroimmunology -MS and Neuromuscular Diseases

[Natalia Gonzalez Caldito, M.D.](#)
Director –[MS & Neuroimmunology
Center](#), [ALS and Neuromuscular EMG Center](#),
[IV Infusion Ctr](#) Clinical Assistant Professor of
Medicine (Neurology) University of Hawaii John
Burns School of Medicine



Epilepsy - Seizing the Opportunity

[Darren DuGas, M.D.](#)
Co-Director, [Comprehensive
Epilepsy Ctr](#) Director, [Video-
EEG Epilepsy Monitoring Unit](#),

Clinical Assistant Professor of Medicine
(Neurology), University of Hawaii John
Burns School of Medicine



Alzheimer’s & Parkinson’s Disease Innovations in 2025

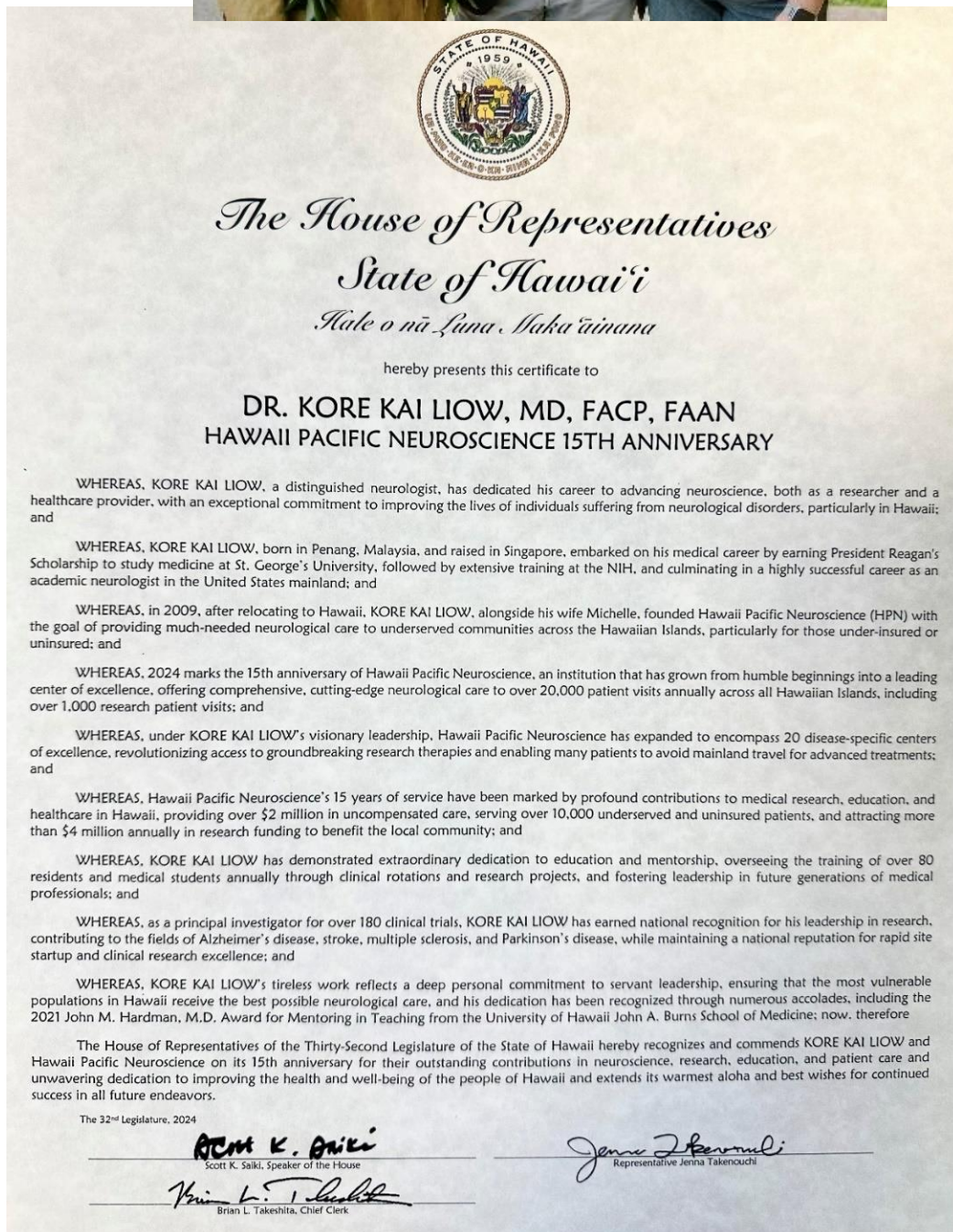
Michael Sonson, M.D.
Behavioral Neurology Fellow, Cedar Sinai UCLA
[Kore Kai Liow, M.D.](#) Interim Director, [Memory
Disorders Center](#), [Parkinson’s & Movt Dis Center](#)
Clinical Professor of Medicine (Neurology),
U of Hawaii John Burns School of Medicine



Oct 19th, 2024, Honolulu,

Mahalo to: *Hawaii State Governor Joshua Green, MD for joining us in recognizing the amazing physicians, researchers and dedicated staff of Hawaii Pacific Neuroscience on their 15th anniversary.*

Hawaii State House of Representatives, 32nd Legislature for presenting our 50+ physicians, researchers and staff (represented by Kore Kai Liow, MD) with certificate to recognize their dedication and commitment in serving the underserved in Hawaii, attracting advanced treatments and research to our islands to benefit local community, mentoring residents, students and next generation healthcare leaders for Hawaii.



*The House of Representatives
State of Hawai'i
Kale o nā Lina, Maka 'āinana*

hereby presents this certificate to

**DR. KORE KAI LIOW, MD, FACP, FAAN
HAWAII PACIFIC NEUROSCIENCE 15TH ANNIVERSARY**

WHEREAS, KORE KAI LIOW, a distinguished neurologist, has dedicated his career to advancing neuroscience, both as a researcher and a healthcare provider, with an exceptional commitment to improving the lives of individuals suffering from neurological disorders, particularly in Hawaii; and

WHEREAS, KORE KAI LIOW, born in Penang, Malaysia, and raised in Singapore, embarked on his medical career by earning President Reagan's Scholarship to study medicine at St. George's University, followed by extensive training at the NIH, and culminating in a highly successful career as an academic neurologist in the United States mainland; and

WHEREAS, in 2009, after relocating to Hawaii, KORE KAI LIOW, alongside his wife Michelle, founded Hawaii Pacific Neuroscience (HPN) with the goal of providing much-needed neurological care to underserved communities across the Hawaiian Islands, particularly for those under-insured or uninsured; and

WHEREAS, 2024 marks the 15th anniversary of Hawaii Pacific Neuroscience, an institution that has grown from humble beginnings into a leading center of excellence, offering comprehensive, cutting-edge neurological care to over 20,000 patient visits annually across all Hawaiian Islands, including over 1,000 research patient visits; and

WHEREAS, under KORE KAI LIOW's visionary leadership, Hawaii Pacific Neuroscience has expanded to encompass 20 disease-specific centers of excellence, revolutionizing access to groundbreaking research therapies and enabling many patients to avoid mainland travel for advanced treatments; and

WHEREAS, Hawaii Pacific Neuroscience's 15 years of service have been marked by profound contributions to medical research, education, and healthcare in Hawaii, providing over \$2 million in uncompensated care, serving over 10,000 underserved and uninsured patients, and attracting more than \$4 million annually in research funding to benefit the local community; and

WHEREAS, KORE KAI LIOW has demonstrated extraordinary dedication to education and mentorship, overseeing the training of over 80 residents and medical students annually through clinical rotations and research projects, and fostering leadership in future generations of medical professionals; and

WHEREAS, as a principal investigator for over 180 clinical trials, KORE KAI LIOW has earned national recognition for his leadership in research, contributing to the fields of Alzheimer's disease, stroke, multiple sclerosis, and Parkinson's disease, while maintaining a national reputation for rapid site startup and clinical research excellence; and

WHEREAS, KORE KAI LIOW's tireless work reflects a deep personal commitment to servant leadership, ensuring that the most vulnerable populations in Hawaii receive the best possible neurological care, and his dedication has been recognized through numerous accolades, including the 2021 John M. Hardman, M.D. Award for Mentoring in Teaching from the University of Hawaii John A. Burns School of Medicine; now, therefore

The House of Representatives of the Thirty-Second Legislature of the State of Hawaii hereby recognizes and commends KORE KAI LIOW and Hawaii Pacific Neuroscience on its 15th anniversary for their outstanding contributions in neuroscience, research, education, and patient care and unwavering dedication to improving the health and well-being of the people of Hawaii and extends its warmest aloha and best wishes for continued success in all future endeavors.

The 32nd Legislature, 2024

Scott K. Saiki
Scott K. Saiki, Speaker of the House

Brian L. Takeshita
Brian L. Takeshita, Chief Clerk

Jenna Takenouchi
Representative Jenna Takenouchi