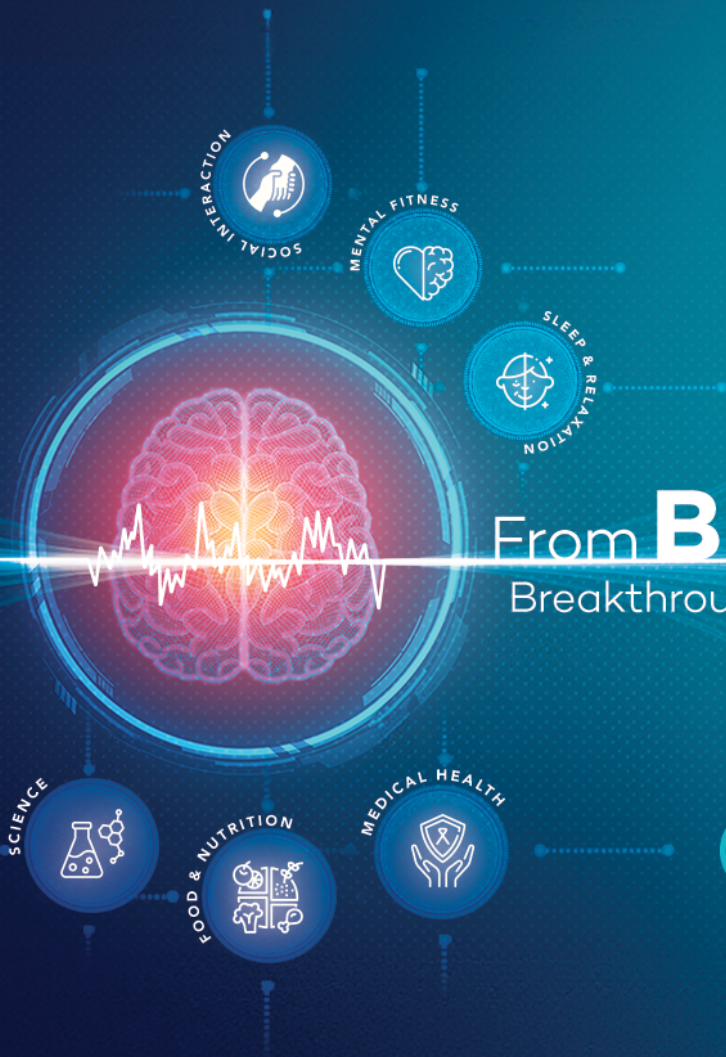


15TH
ANNIVERSARY

HPN
HAWAII PACIFIC
NEUROSCIENCE

Symposium



From **Brainwaves** to
Breakthroughs **Neuroscience**

19 OCT 2024



**Celebrating
15th Anniversary**

**October 19th Saturday
8:45AM - 5:00PM**

**Ko'Olau Ballrooms &
Conference Center**

45-550 Kionaole Rd, Kaneohe, HI 96744

[Register Online / Online info](#)

*Serving the Underserved with Compassion
Advancing Neuroscience Care
for the Future of Hawaii since 2009*

Aloha Friends,

It is with great honor and pleasure that we invite you to be part of our 15th Anniversary to celebrate the privilege of serving the people of Hawaii since 2009.

John Wooden once said “it isn’t about what you do, but how you do it” and that has been so true for us for the past 15 years. Anyone can treat patients, do research and teach but it is “how” and “why” that made us who we are today. Our compassion for people, especially for the underserved compelled us to forsake our retirement and invest in training like-minded individuals who sacrificially come alongside us to serve. The “why” then drives the “how” to ensure these people have the absolute best care and services including world class research options without having to travel far away from their ohana here in Hawaii to find hope. [Click for history by KITV News.](#)

We are honored to have Hawaii Governor Joshua Green, MD, who shares the same heart and compassion for the underserved in our community to celebrate with us.

It is with great pleasure we invite you to join Hawaii Governor Green and us to celebrate and honor these amazing physicians, scientists, researchers, staff and aspiring students who have worked tirelessly to advance neuroscience care for the future of Hawaii since 2009 and will continue to do so for generations to come!

Aloha,



Kore Kai Liow, MD

Neuroscience Chair & Founder
Hawaii Pacific Neuroscience
Clinical Professor, Dept. Medicine (Neurology)



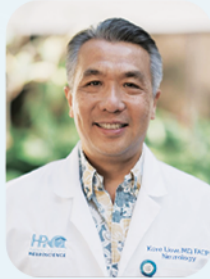
Michelle Liow

Healthcare Administrator & Co-Founder
Hawaii Pacific Neuroscience

October 19th, Saturday AGENDA



Welcome: *Compassion, Excellence & Innovation Synpasing Together in Hawaii*



Kore Kai Liow, M.D
Neuroscience Chair
and Founder



Joshua Green, M.D
Honorable Governnor of the state
of Hawaii, Guest of Honor

Poster and Exhibit Hall: 7:45am - 8:45am, 12pm - 1pm, 3:30pm - 4:45pm

Plenary Session: 9am - 3pm



Frontiers in Neuroscience - Bench to Bedside Translational Discovery for GBM

Michael Lim, M.D

Professor and Chair, Dept. Neurosurgery,
Stanford University School of Medicine, Keynote Speaker



Modifying Upstream - Risk factors of Neurological Conditions in Native Hawaiians

Keawe Kaholokula, PhD.

Professor & Chair, Dept. of Native Hawaiian Health,
University Hawaii John Burns School of Medicine



Restful Sleep - Essential for a Sound Mind

Nicholas Anderson, M.D

Director, [Sleep & Insomnia Center](#)



Mapping the Last Frontier – The Human Brain & Novel Epilepsy Therapies

Darren DuGas, M.D

Epilepsy EEG Fellow, Yale University

Director, [Video-EEG Epilepsy Monitoring Unit](#), Co-Director, [Comprehensive Epilepsy Ctr](#)



Innovations in Pain Pathways & Migraine Treatments

TaeHong Lim, M.D

Headache Pain Fellow, Stanford University

Director, [Headache & Facial Pain Center](#), [Spine & Pain Management Center](#)



Leveraging Neuroimmunology Targeting Precise Mechanistic Targets – Multiple Sclerosis & Neuromuscular Diseases

Natalia Gonzalez Caldito, M.D

Neuroimmunology Fellow, Northwestern, Neuromuscular Fellow, UC Irvine

Director – [Comprehensive MS Center](#), [Neuromuscular EMG Center](#), [IV Infusion Ctr](#)

Dawn of a New Therapeutic Era for Alzheimer's & Parkinson's Disease



Kore Liow, M.D. Director

[Memory Disorders Center](#) & [Parkinson's & Movement Disorders Center](#)



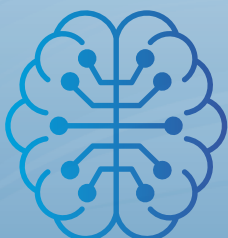
Michael Sonson, M.D

Cognitive Neurology Fellow,
Cedar Sinai, Los Angeles,
BRITL Intern 2016



Bryce Kalei Chang, M.D

Neurology Resident, Mayo Clinic,
Rochester, BRITL Intern 2017



Scientific Session: 3:30pm - 5pm **Hawaii Neuroscience Research Poster Presentation**

Poster Presentation by [Brain Research, Innovation, Translation Labs \(BRITL\)](#)

Award Presentation for 2024 Hawaii's Best Neuroscience Research Poster by
Josh Green, MD Governor of Hawaii

2024 Brain Research, Innovation, Translation Lab (BRITL)

Poster Presentation Competition

October 19th Saturday

3:00PM - 5:00PM

Ko'olau Ballrooms & Conference Center 45-500 Kionaole, Kaneohe, Hawaii

[Register Online](#) (Submission Deadline: August 30th, 2024)

Eligibility:

This competition is open to all students Graduates, Postgraduates and Research Scholars, residents, physicians. Presenters must [register online](#) to attend conference to present their poster at the conference. If the registered presenter is unable to attend the conference he/she may send a substitute.

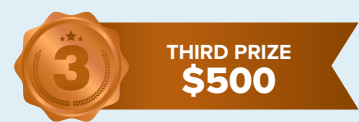
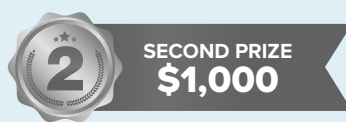
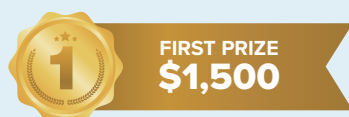
Abstract submission guidelines:

Abstracts have to be submitted by email to BRITL@hawaiiineuroscience.com by August 30th 2024.

Abstracts should contain no more than 600 words. Present numerical data in the form of graphs, rather than tables (graphs make trends in the data much more evident). If data must be presented in table-form, Keep it Simple. Avoid acronyms and extensive mathematical notations as much as possible. Abstracts accepted for the presentation will be notified through email and those will be displayed on [BRITL website](#).

Poster guidelines:

The abstract should include complete details of the contestant (e.g., abstract title, name, affiliation, abstract etc). For sample posters [click here](#). The winners will be announced at the closing ceremony of the conference. The decision of the winner will be withdrawn if the winner/winners is/are not present at the time of announcement. Panel of judges will score posters and prize awarded as follows:



Discount maybe available for those presenters unable to register at full price, email kliow@hawaii.edu to request for discount.

Panel of Judges



Enrique Carrazana, MD
Neurology (Head Judge)



Michael Lim, M.D
Professor and Chair,
Dept. Neurosurgery, Stanford
University School of Medicine



David Baskin, MD
Professor and Vice Chair,
Dept Neurosurgery, Residency
Program Director, Houston Methodist
Hospital Weill Cornell Medical College



Keawe Kaholokula, PhD
Professor and Chair
Dept Native Hawaiian Health



**Janette
Abramowitz, MD**
Neurology



Eliza Hagen, MD
Neurology



Kore Liow, MD
Neurology



Darren Dugas, MD
Neurology



TaeHong Lim, MD
Neurology



Michael Sonson, MD
Neurology



Bryce Kalei Chang, MD
Neurology



**Nicholas
Anderson, MD**
Sleep Medicine



**Chathura
Siriwardhana, PhD**
Biostatistics



Lawrence Burgess, MD
Surgery,
Director Student Affairs

