



16

TH  
SYMPOSIUM



THE GOLDEN AGE OF  
*Neuroscience*  
Discovery

AUGUST 16<sup>TH</sup> 2025

HONOLULU, HAWAII



***August 16<sup>th</sup> Saturday***

***8:00AM - 4:00PM***

***Ko'Olau Ballrooms &  
Conference Center***

***45-550 Kionaole Rd,  
Kaneohe, HI 96744***

***15-20 minutes from Waikiki***

***Exploring how new knowledge from genetics,  
technology, AI & other new tools is  
accelerating neuroscience discovery***

***More information: [info@HawaiiNeuroscience.com](mailto:info@HawaiiNeuroscience.com)***

**Register Online/Online info**  
**[www.hawaiineuroscience.com/hpnevents](http://www.hawaiineuroscience.com/hpnevents)**

*Aloha Friends,*

*Did you know that in 2024, scientists combine AI with a ‘minibrain’ or cerebral organoids to make hybrid computers? Researchers plugged a “brain organoid” into an AI system, using the neural tissue to help complete computational tasks. Could such endeavor mark a step toward “biocomputers”? Could it lead to more insight into how the brain works and how it is affected by neurodegenerative conditions, such as Alzheimer’s and Parkinson’s disease.*

*I invite you to join us this year to explore the exciting “**Golden Age**” **Neuroscience Discovery in 2025** as we hear from experts on how AI Technology, Genetics, Neurostimulation & Psychedelics innovates treatments of Migraine, MS, Neuromuscular, Neuroimmunological diseases, Epilepsy, Pain, Apnea, Alzheimer’s & Parkinson’s Diseases.*

*Limited Space [register](#) online today.*



**Kore Kai Liow, MD**

Chair, Organizing Committee  
Neuroscience Chair, Hawaii Pacific Neuroscience  
Clinical Professor, Dept. of Medicine (Neurology),  
Clinical & Translational Research.  
University of Hawai'i John Burns School of Medicine



# 16<sup>TH</sup> SYMPOSIUM THE GOLDEN AGE OF *Neuroscience* *Discovery*



## *Scientific Plenary Session*

### Highlights of Innovations & Medical Breakthroughs in Hawaii

*Sam Shomaker, M.D.*

Professor and Dean,  
University of Hawaii John Burns School of Medicine



### Emerging Trends in Neuroscience — Are We Living in the Golden Age of Neuroscience?

*David Baskin, M.D.*

Presidential Distinguished Chair and Professor  
Residency Program Director, Dept. Neurosurgery  
Houston Methodist Hospital, Weill Cornell Medical College



### Rapid Acting Therapeutics for Neuropsychiatric Illness - Neurostimulation & Psychedelics

*Nolan Williams, M.D.*

Associate Professor Psychiatry & Behavioral Sciences,  
Director, Brain Stimulation Laboratory, Director, Interventional  
Psychiatry Clinical Research, Department of Psychiatry and  
Behavioral Sciences, Stanford University School of Med



### How Hawaii is Leading Innovation In Neuroscience

*Kore Kai Liow, M.D.*

Chair, Organizing Committee  
Neuroscience Chair, Hawaii Pacific Neuroscience  
Clinical Professor, Dept. of Medicine (Neurology),  
Clinical & Translational Research.  
University of Hawai'i John Burns School of Medicine



### Sleep Apnea Innovations

*Nicholas Anderson, M.D.*

Clinical Lead & Director, Sleep and Insomnia Center  
Hawaii Pacific Neuroscience  
Clinical Assistant Professor of Medicine (Neurology)  
University of Hawaii John Burns School of Medicine





## Epilepsy - Seizing the Opportunity

***Darren DuGas, M.D.***

Co-Director, Comprehensive Epilepsy Center Director  
Video EEG Epilepsy Monitoring Unit  
Hawaii Pacific Neuroscience  
Clinical Assistant Professor of Medicine (Neurology)  
University of Hawaii John Burns School of Medicine



## Break Throughs in Neuroimmunology — MS and Neuromuscular Diseases

***Natalia Gonzalez Caldito, M.D.***

Director, MS & Neuroimmunology Center, Infusion Center  
ALS and Neuromuscular EMG Center  
Hawaii Pacific Neuroscience  
Clinical Assistant Professor of Medicine (Neurology)  
University of Hawaii John Burns School of Medicine



## Innovations in Rewiring Headache & Pain Pathways

***Eonjung Angeline Kim, M.D.***

Director, Headache & Facial Pain Center  
Hawaii Pacific Neuroscience  
Clinical Assistant Professor of Medicine (Neurology)  
University of Hawaii John Burns School of Medicine

## Alzheimer's & Parkinson's Disease Innovations in 2025



***Michael Sonson, M.D.***

Behavioral Neurology Fellow,  
Cedar Sinai UCLA



***Kore Kai Liow, M.D.***

Interim Director, Memory Disorders Center,  
Parkinson's & Movt Dis Center  
Clinical Professor of Medicine (Neurology),  
U of Hawaii John Burns School of Medicine

# Why Sponsor?

*We anticipate over 250 participants from region to attend.*

Through a symposium sponsorship, your company will gain direct access to all professions and the community.



Sponsorships are designed to help you increase your brand recognition by engaging and networking with HPN attendees. Whether you are seeking new business, or growing your partnership with key clients, HPN sponsorship is your chance to leverage valuable opportunities. Sponsors will have the opportunity to present valuable industry insights and updates at the Scientific Poster Session, allowing them to share essential data and information with conference attendees.

There are many benefits to being a sponsor – all providing maximum return on your investment. For further inquiries please contact **Rhea** at [info@hawaiineuroscience.com](mailto:info@hawaiineuroscience.com) or call **808-564-6142**

## Scientific Poster Session

**8:00am — 10:00am**

Poster Presentation

Poster Presentation Competition by residents and students

**3:00pm — 4:00pm**

Prize Award Presentation by Dean of Medical School

Presenting your research and data at our scientific poster session is a great opportunity to showcase your research results and data. This is also a great venue to meet and network with conference participants. Representatives of organizations are invited to present and share your important industry data during this session.

*\* Previously presented posters at other meetings are allowed*

*\* Poster presenters will need to be registered and attend meetings in person*

*\* Industry Posters will need to be Registered under Biomedical Representative (see next page) and not General Registration*

BENEFITS	EXECUTIVE DIAMOND	VISIONARY PLATINUM	CHAMPION GOLD	HOST SILVER	CONTRIBUTOR BRONZE
	\$12995	\$9995	\$4995	\$2499	\$999
Complimentary Registration (4 tickets) Valued \$1000	By Invitation ONLY One exclusive sponsor per Disease  Categories available: • Sleep Disorders • Epilepsy • Headache • Pain Medicine • MS • Neuromuscular • Alzheimer's • Parkinson's & Movement				
Complimentary Registration (2 ticket) Valued \$500 Complimentary Registration (1 ticket) Valued \$250		2 tickets	2 tickets	1 ticket	1 ticket
VIP Parking					
VIP Exhibition Booth		X			
Exhibition Booth			X	X	
30 Second Video Commerical During Breaks		X			
Logo on Program Brochures		X	X		
Sponsor recognition during opening		X			
Industry Poster Optional complimentary poster presentation	2	2	1	1	1

# Exhibition Space Application

16<sup>TH</sup> August 2025 8:00AM - 4:00PM

Please complete all sections, sign and return via email to [info@hawaiineuroscience.com](mailto:info@hawaiineuroscience.com). Upon receipt, follow-up details will be assigned to you. Visit [www.hawaiineuroscience.com/sponsorship-participation/](http://www.hawaiineuroscience.com/sponsorship-participation/) for online submission.

-----  
NAME OF ORGANIZATION:

-----  
NAME OF PERSON(S) IN CHARGE OF EVENT:

-----  
CONTACT NUMBER:

-----  
ORGANIZATION ADDRESS:

-----  
CONTACT EMAIL:

- ☐ Visionary Platinum ☐ Champion Gold ☐ Host Silver  
☐ Contributor Bronze ☐ Participator Medal

CHOOSE SPONSORSHIP LEVEL

Preferred Method of Payment by ACH Transfer or Checks may be mailed to:

Attn: **Symposium Organizing Committee**  
Hawaii Pacific Neuroscience Foundation  
2230 Liliha Street, Ste 104,  
Honolulu, HI 96817

Briefly describe the products or services that you will be advertising:

-----  
Sponsor's Name and Signature

-----  
Date



# 2025 BRAIN (Bridging Research, Innovation and in Neuroscience) Scholars and Internship Program



## Poster Presentation Competition

**August 16<sup>th</sup> Saturday**

**8:00am — 10:00am Poster Presentation**

**3:00pm — 4:00pm Prize Award Presentation by Dean of Medical School**

**Ko'olau Ballrooms & Conference Center 45-500 Kionaole, Kaneohe, Hawaii**

**[Register Online](#) (Submission Deadline: July 18<sup>th</sup>, 2025)**

### Eligibility:

This competition is open to all students Graduates, Postgraduates and Research Scholars, residents, physicians. Presenters must [register at www.hawaii neuroscience.com/hpnevents](http://www.hawaii neuroscience.com/hpnevents) to attend conference to present their poster at the conference. If the registered presenter is unable to attend the conference he/she may send a substitute.

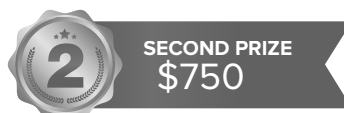
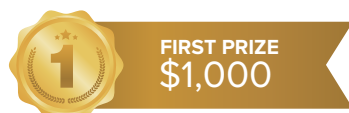
### Abstract submission guidelines:

Abstracts have to be submitted by email to [BRITL@hawaii neuroscience.com](mailto:BRITL@hawaii neuroscience.com) by July 18<sup>th</sup> 2025.

Abstracts should contain no more than 600 words. Present numerical data in the form of graphs, rather than tables (graphs make trends in the data much more evident). If data must be presented in table-form, Keep it Simple Avoid acronyms and extensive mathematical notations as much as possible. Accepted abstract will be published online at [www.hawaii neuroscience.com/BRITL](http://www.hawaii neuroscience.com/BRITL).

### Poster guidelines:

The abstract should include complete details of the contestant (e.g., abstract title, name, affiliation, abstract etc). For sample posters [go to www.hawaii neuroscience.com/samples](http://www.hawaii neuroscience.com/samples). The winners will be announced at the closing ceremony of the conference. The decision of the winner will be withdrawn if the winner/winners is/are not present at the time of announcement. Panel of judges will score posters and prize awarded as follows:



# 2025 Panel of Judges



**Kore Kai Liow, MD**  
Neurology,  
Hawaii Pacific Neuroscience



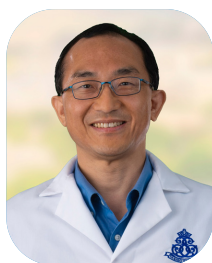
**David Baskin, MD**  
Neurosurgery



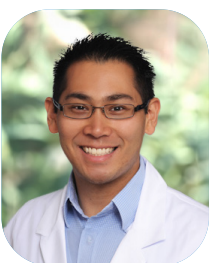
**Reid Hoshide, MD**  
Neurosurgery



**Janette Abramowitz, MD**  
Hawaii Pacific Neuroscience  
Neurology



**Dominic Chow, MD**  
Medicine, Queens



**Michael Lui, MD**  
Neurology, Hawaii Pacific Health



**Eonjung Angeline Kim, MD**  
Hawaii Pacific Neuroscience  
Neurology



**VD Patel, MD**  
Neurology, Queens



**Nolan Williams, MD**  
Psychiatry, Stanford



**Monique Canonico, DO**  
Neurology,  
Kaiser Permanente



**Darren Dugas, MD**  
Neurology,  
Hawaii Pacific Neuroscience



**Natalia Gonzales, MD**  
Neurology,  
Hawaii Pacific Neuroscience



**Michael Sonson, MD**  
Neurology, UCLA



**Bryce Kalei Chang, MD**  
Neurology, Mayo Clinic



**Enrique Carrazana, MD**  
Neurology,  
Hawaii Pacific Neuroscience



**Samia Valeria,  
PhD, RN**  
University of Hawaii





